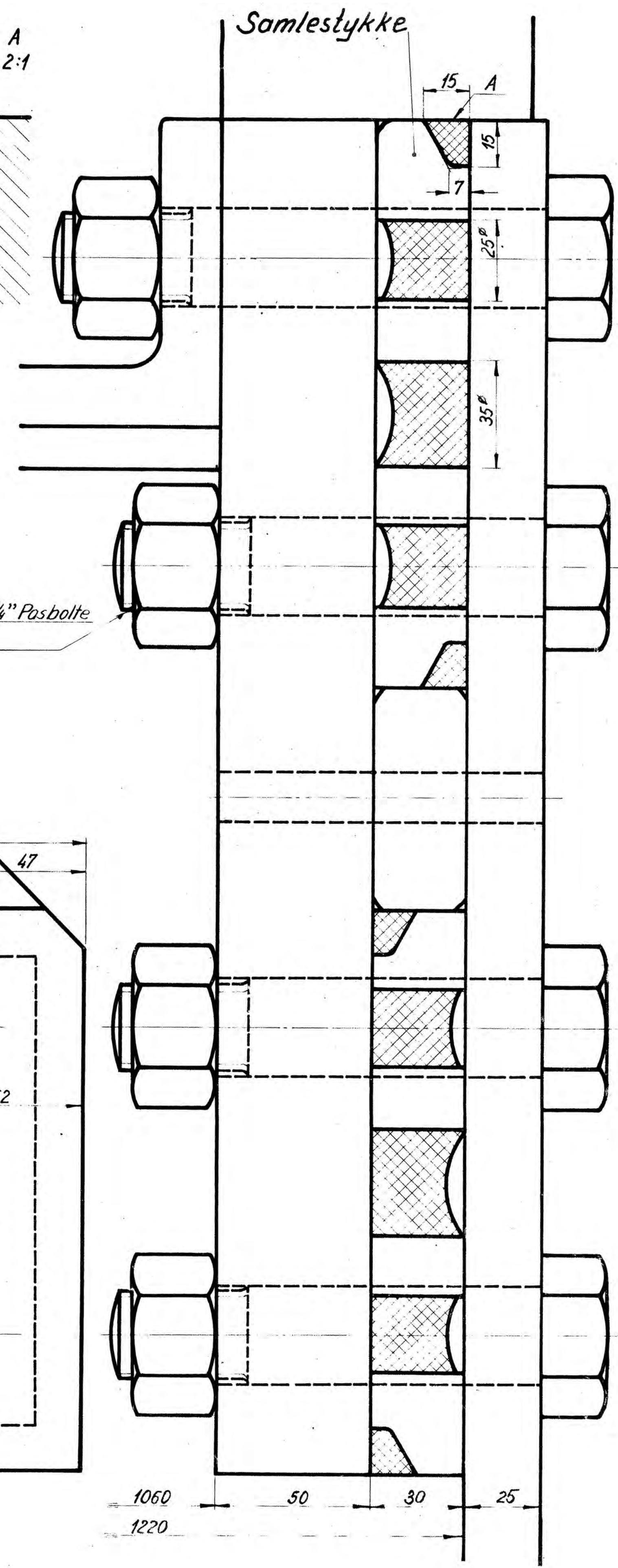
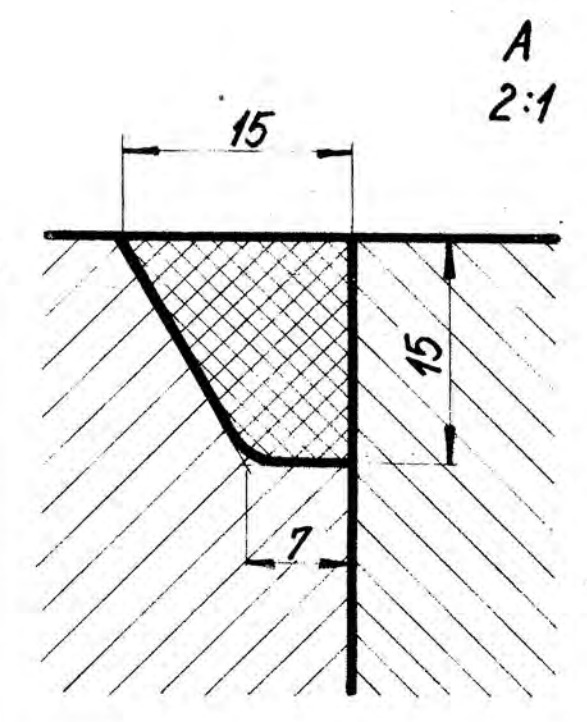
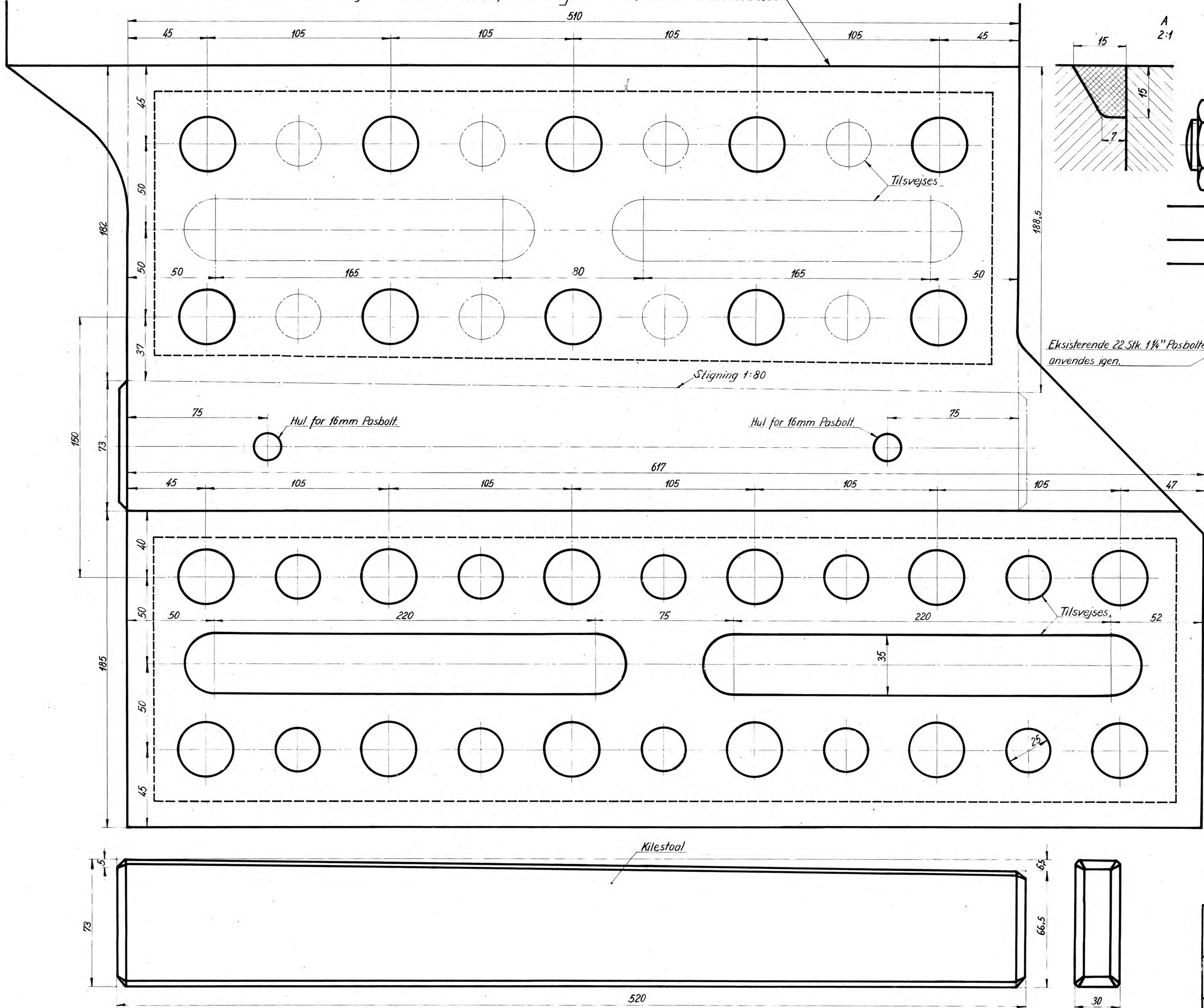


Denne Flade bearbejdes først efter Opmaaling af mellemste Rammedel.



Forandringer	Ny Kalk	A 1-5-44	E. S.
De danske Statsbaner Maskinafdelingen.		Maalest. 1:1 2:1	Tegn 6-7-42 Kalk 21-4-44 Rev 7/4 42 Godk
Samling mellem Stang- og Plade- ramme Loko Ltr. Pr.		A1	PR. 67a.